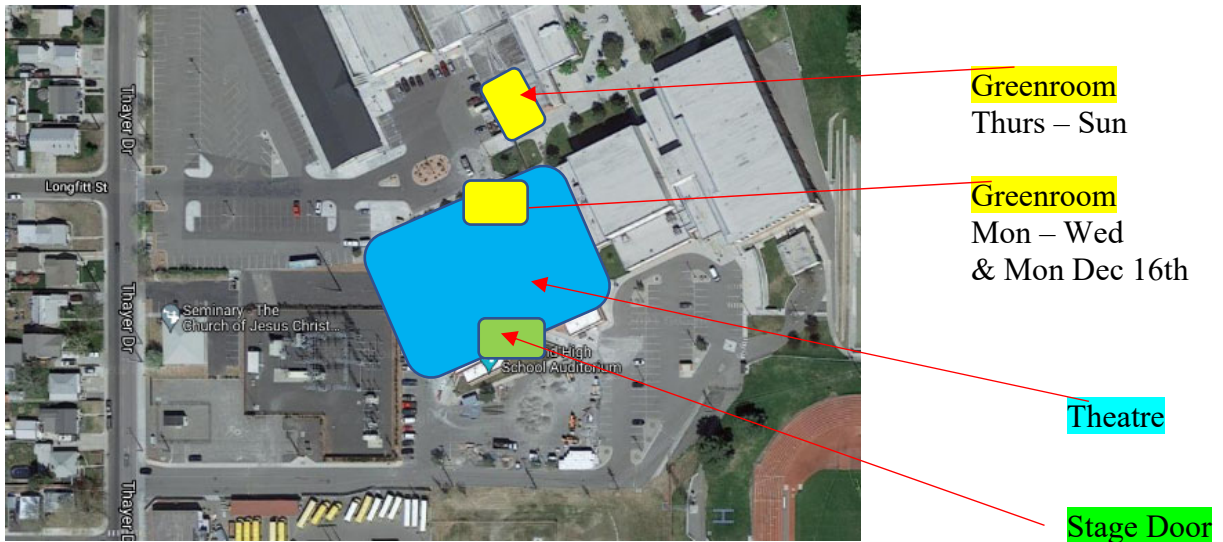


# FINAL NUTCRACKER REHEARSAL SCHEDULE & PRODUCTION INFORMATION

Dec 7<sup>th</sup> Saturday  
 12:00-1:00 Act 1  
 1:30-2:30 Act 2  
 2:30 Intermediate/Junior company meeting

**Sunday Dec 8<sup>th</sup> Individual photos in costume. Pre sign-up required**

- All rehearsals will be held at Richland High School Auditorium beginning Monday December 9th
- From Wednesday onward come with performance hair and moisturizer, a neutral skin tone foundation, and black mascara already applied.
- Start wearing ChapStick now. It is very difficult to apply lipstick to dry, cracked lips
- Wear ballet attire at all rehearsals and performances (Girls-Leotard, tights & ballet slippers. Boys-Bike shorts & white shirts)
- All rehearsals on stage are absolutely closed for viewing.
- Only cast members and production staff are allowed in the Auditorium.
- All cast members must wear slippers or socks over their ballet shoes when they are in the hallways and dressing rooms.
- Community dancers, Jr & Int company members use the Greenroom entrance to enter and for pickup.
- Sr company members, adult cast members and backstage volunteers use the Stage Door entrance at all times.
- Parents: Do not ask dancers to wait outside for you.



**ALL REHEARSALS FROM NOW ON ARE AT THE RICHLAND HIGH SCHOOL AUDITORIUM**

Monday December 9	3:00 – 4:00pm 4:15pm 5:15pm 5:30pm 6:30pm 6:00 – 8:30pm 8:30 – 9:00pm	Warm-up (MCB Sr Co only) at TCAB Check In Snow Scene Green room opens, do not bring your child earlier than this Check In Party & Battle Scene Snow Sc dismissed Party & Battle Scene Grand Pas
Tuesday December 10	3:00 – 4:00pm 3:45pm 4:00pm 4:30 – 7:30pm 5:45pm 6:15pm 7:15pm 7:45 – 9:00pm	Warm-up (MCB Sr Co only) at TCAB Green room opens, do not bring your child earlier than this Check In Act II Act II Dismiss Palace Sc Dismiss Arabian Check In Act I Act I

Wednesday, December 11	4:00pm – 5:00pm 4:30pm 4:45pm 6:15 – 7:30pm 6:30pm 8:00p 7:30 – 9:00pm	Warm-up (MCB Sr Co only) at TCAB Green room opens, do not bring your child earlier than this Check In Act I (Band room not open until 5pm) Act I Check In Act II community dancer Act II released Act II
Thursday, December 12	4:00pm – 5:00pm 4:30pm 4:45pm 6:15 – 7:30pm 6:30pm 7:30 – 9:00pm	Warm-up (MCB Sr Co only) at TCAB Green room opens, do not bring your child earlier than this Check In Act I Act I Check In Act II Act II
Friday, December 13	4:45 – 5:45pm 5:15pm 5:30pm 6:30pm 7:00pm	Warm-up (MCB Sr Co only) at Theatre Green room opens, do not bring your child earlier than this Check In Act I Check In Act II CURTAIN
Saturday, December 14	10:45 – 11:45pm 11:15am 11:30am 12:30pm 1:00pm 3:15pm	Warm-up (MCB Sr Co only) at Theatre Green room opens, do not bring your child earlier than this Check In Act I Check In Act II CURTAIN Green room CLOSES
Saturday, December 14	5:30 – 6:00 5:15pm 5:30pm 6:30pm 7:00pm	Warm-up (MCB Sr Co only) at Theatre Green room opens, do not bring your child earlier than this Check In Act I Check In Act II CURTAIN
Sunday, December 15	10:45 – 11:45pm 11:15am 11:30am 12:30pm 1:00pm	Warm-up (MCB Sr Co only) at Theatre Green room opens, do not bring your child earlier than this Check In Act I Check In Act II CURTAIN
Act I dancer will not be able to watch the 2 <sup>nd</sup> Act of this performance. All dancers will need to bring a snack		
	4:00pm 5:00pm 5:45pm	<i>CURTAIN Abridge sensory friendly performance</i> Pick-up time for Act 1 Pick-up time for Act II
Monday, December 16	7:30 – 8:20am 8:20 – 8:30am 7:45am 8:00am 9:00am 9:30am 12:00pm 1:00PM 1:30PM	Warm-up (MCB Sr Co only) at Theatre Sr. Reh of school show Green room opens, do not bring your child earlier than this Check In Act I - All dancers will need to bring a lunch Check In Act II - All dancers will need to bring a lunch CURTAIN CURTAIN Pick-up time for Act I Pick-up time for Act II